

4SLV4 FRAME ASSEMBLY REFERENCE

-Before any re-assembly clean all surfaces of any dried loctite, dirt, or grease.

-Clean all surfaces with isopropyl alcohol and let dry before assembling.

-Apply Loctite 638 or an equivalent to all bearing pocket when installing bearings. Use a round wooden toothpick to spread the material evenly around the pocket before installing the bearing.

-Press fit bearings are installed during pre-assembly and are shown in **orange**. Slip fit bearings are installed during frame assembly and are shown in **light blue**.

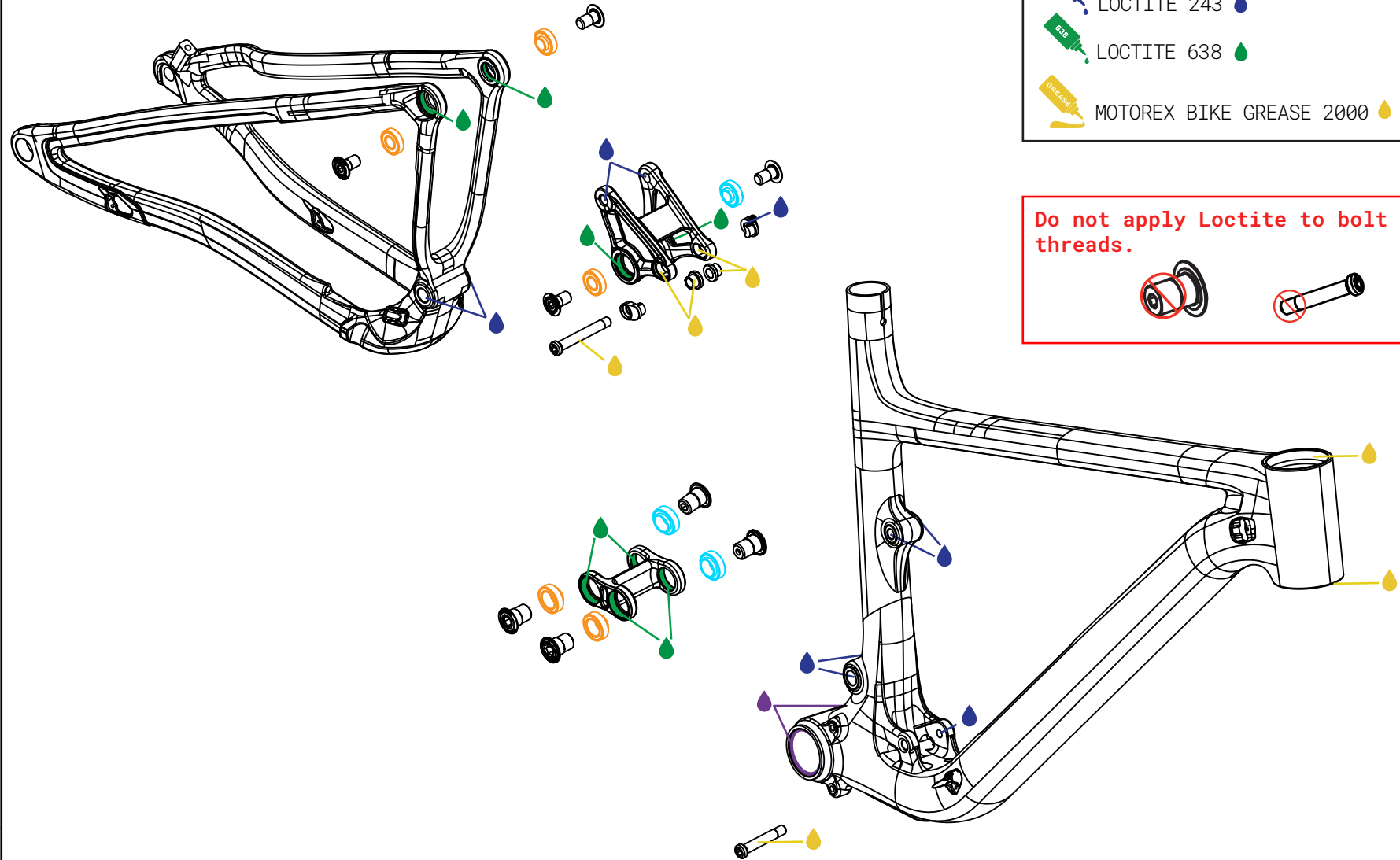
-Apply Loctite 243 or an equivalent to the female threads of the frame, link, or flip chip, not on the bolt threads. Use a round wooden toothpick to spread the material evenly around the threads.










-Apply Motorex Bike Grease 2000 to the flip chip pockets and spacers.

-Apply Motorex Bike Grease 2000 to the shaft of the upper and lower shock bolts, but do not grease the threads. The threads need to remain clean for the Loctite 243.

-Clean any excess Loctite with a towel and isopropyl alcohol to prevent finish damage.

-Apply Loctite 222 or an equivalent to the inner diameter of the bottom bracket shell before installing BB cups.



	LOCTITE 222		
	LOCTITE 243		
	LOCTITE 638		
	MOTOREX BIKE GREASE 2000		

Do not apply Loctite to bolt threads.




PART NUMBER	QTY
-------------	-----

24mm 3802 Extended	FP-BRG-3802-LLUMAXECN-B0	4
22mm 6900 Extended	FP-BRG-6900-LLUMAXE-B0	4